

Applications

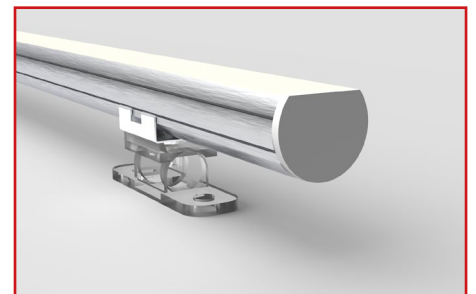
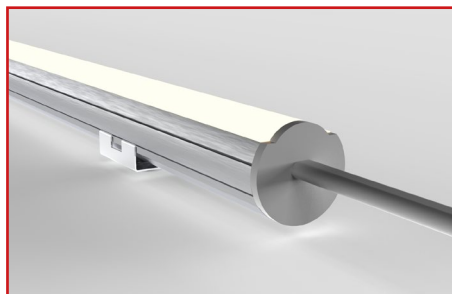
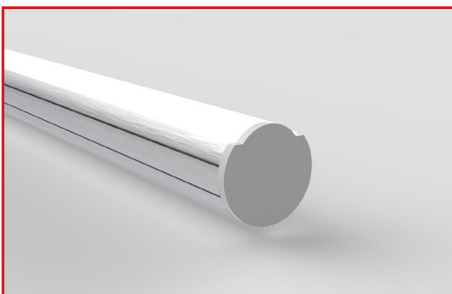
- Coves
- Furniture
- Back-lighting
- Wet Locations

Features

- IP54 - IP67
- 3 step MacAdam
- Small cut increments of 50mm up to 2000mm
- 2200K - 2400K - 2700K - 3000K - 3500K - 4000K - 5000K - 5700K
- 114 > 132 lumens per Watt
- CRI >80 - >90
- 120° beam angle as standard
- 17W - 11W - 7W (24V)
- Sleek family of Aluminium profiles with Clear and Opal diffusers
- LM80 Lifetime 50,000 hrs
- Dimmable
- ECO friendly and Energy Saving
- Fixed or Adjustable Bracket

Benefits

- Improved colour consistency across large and small projects
- Greater flexibility to produce a large range of lengths.
- Extensive range of whites to suit all applications
- High lumen output
- Excellent Colour Rendering
- Highest quality Luxeon LEDs
- 3 power options for varying in-direct or direct lighting applications
- Excellent lumen maintenance over lifetime
- ROHS compliant



PRO-P

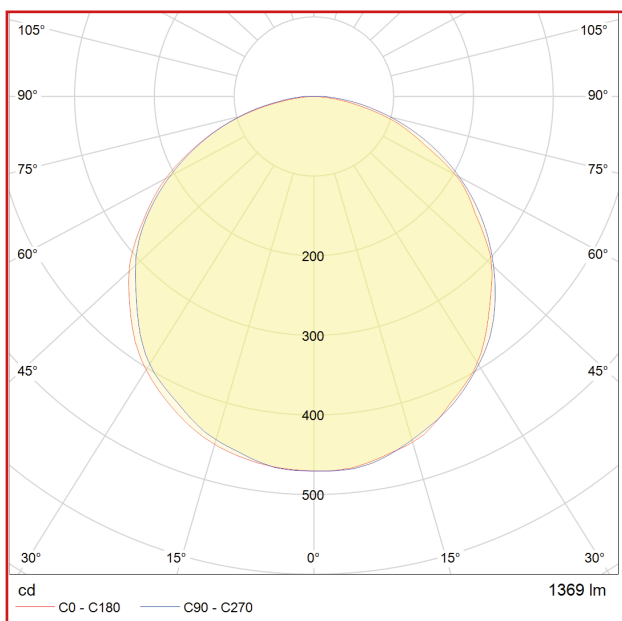


Technical Information

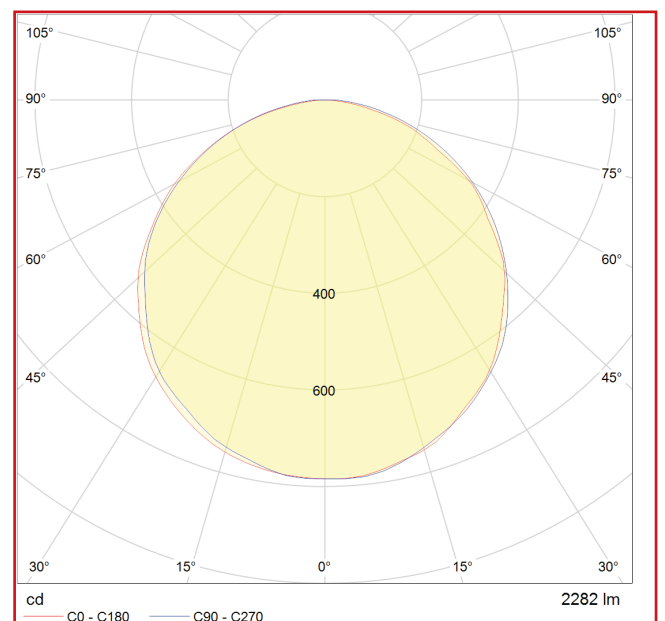
Product Specification	Low Power	Medium Power	High Power
Lumen Output (lm/m) based on 4000K	800	1460	2282
Power (W/m)	7	11	17
Efficacy based on 4000K	114	132	134
Input Voltage	24V		
Colours	2200K - 2400K - 2700K - 3000K - 3500K - 4000K - 5000K - 5700K		
CRI	>80 - >90		
LED Chip	Luxeon		
Binning	3 Step MacAdam		
Control	Switched - 0-10V - DMX - DALI - Bluetooth		
Beam Angles	120°		
Lifetime @ LM80	50,000hrs @ 25°C		
Operating Temp	-25°C to 50°C		
IP Rating	IP54 - IP67		
Cover/Lens	Clear - Opal		
Finish	Anodised Aluminium		
Mounting	Fixed or Adjustable Brackets		
Length	72mm > 2024mm (overall length inc end caps)		

Photometrics

High Power - 4000K - 120° - Opal



High Power - 4000K - 120° - Clear



PRO-P



Product Selector

PRO-P-17-830-O-54-F-####

Power

17W	17
11W	11
7W	7

Colour

>80 CRI - 2200K*	822
>80 CRI - 2400K*	824
>80 CRI - 2700K	827
>80 CRI - 3000K	830
>80 CRI - 3500K	835
>80 CRI - 4000K	840
>80 CRI - 5000K	850
>80 CRI - 5700K	857
>90 CRI - 2200K*	922
>90 CRI - 2400K*	924
>90 CRI - 2700K	927
>90 CRI - 3000K	930
>90 CRI - 3500K	935
>90 CRI - 4000K	940
>90 CRI - 5000K	950
>90 CRI - 5700K	957

Diffuser

Clear (120°)	C
Opal	O

IP Rating

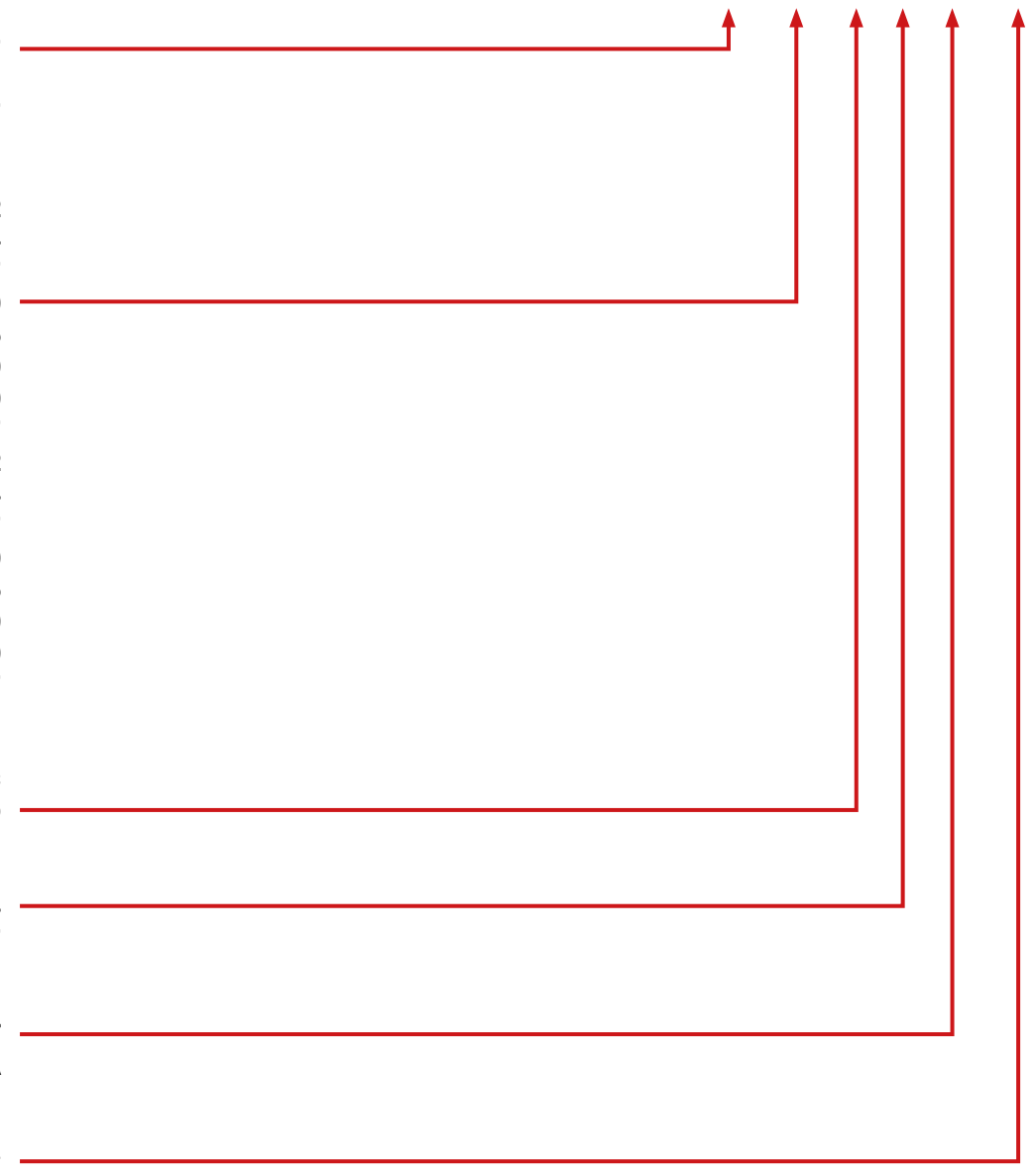
IP54	54
IP67**	67

Mounting Brackets

Fixed	F
Adjustable	A

Length

TBC	####
-----	-------------



* 2200, 2400K not available in IP67

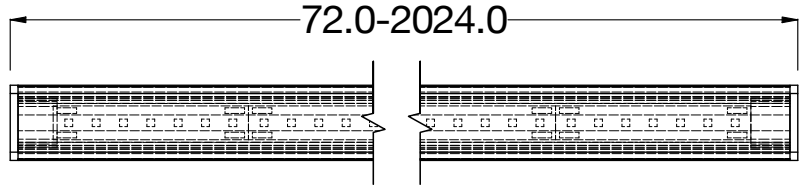
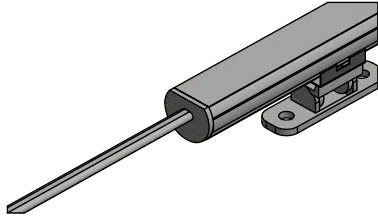
** Tolerances in CCT with IP67 products can occur due to manufacturing process

Please contact our sales team to discuss your requirements.

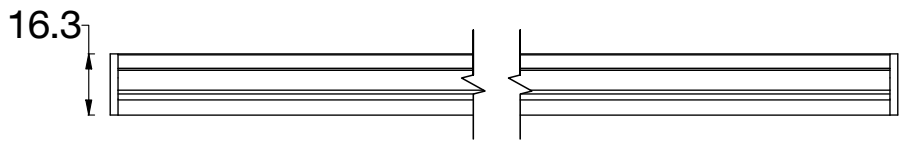
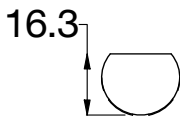


Specification Drawings

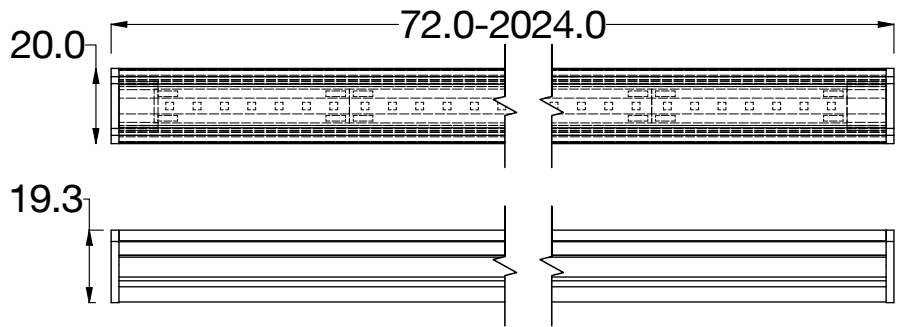
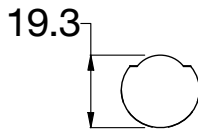
Standard Cable Entry
300mm Tail



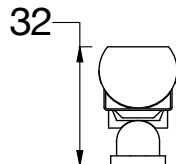
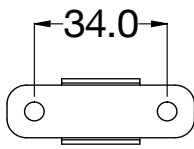
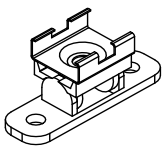
Flat Diffuser



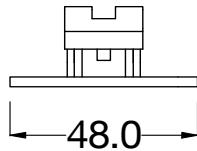
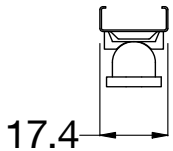
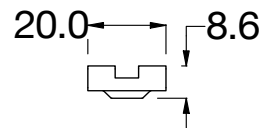
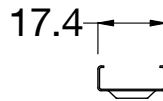
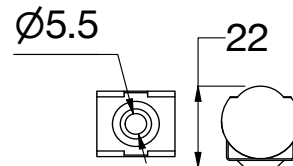
Round Diffuser



Adjustable Bracket



Surface Mount Clip



Complies with EN60598-1 and pertinent regulations



Please contact our sales team on **+44(0)113 263 9039** for further assistance

Specifications are subject to change without prior notice. Please refer to our website for most up to date version

PRO-P

Rev 6 - 02/20

