

Features

- IP67 (Breather glands on all fittings)
- Available in 2700K - 3000K - 4000K - 5700K - Dynamic White - Red - Green - Blue
- 3 step MacAdam
- CRI 80>
- 120 Lumens per Watt (4000K)
- Various Beam Angles
- LM80 lifetime
- Easy installation
- Constant Current
- Dimmable
- Robust Aluminium body for superior strength
- 1245mm Maximum length
- Adjustable or fixed brackets
- Rack mounted control gear available



Overview

Alphaeus 2 is an exciting exterior mid-power linear LED product designed around the Luxeon Z LED, which is suitable for wall washing and façade lighting applications. This product is available in 4 different outputs which range from 2680lm to 1200lm with 4 different beam options for total flexibility. Available in single colours and exciting Dynamic Whites for creating subtle changes in colour temperature from 2700K up to 5700K for working environments to improve personnel performance and well being.

Applications

- Wall & Ceiling Washing
- Facades
- Exterior

Benefits

- Various lengths available from 1245mm - 845mm - 445mm
- Suitable for exterior use in the harshest of environments
- Clear or Frosted lens
- Various colour temperatures available
- Create stunning colour changing effects by DMX or DALI
- Excellent colour rendering
- Highest quality Luxeon LED technology
- Excellent lumen maintenance over time
- Excellent Thermal Management
- Various fixing positions
- Remote drivers up to 50mtrs
- ROHS compliant
- Designed & made in the UK



ALPHAEUS 2

Technical information

ALPHAЕUS 2

| Product Specification | Alphaeus 2 | | | |
|--------------------------------|--|------|------|------|
| Lumen Output (based on 4000k) | 2680 | 2000 | 1480 | 1200 |
| Watts (per mtr) | 30 | 20 | 14 | 10 |
| Efficacy (Based on 4000K @19W) | 92 | 100 | 106 | 120 |
| Drive Current (mA) | 1050 | 700 | 500 | 350 |
| Output | Constant Current | | | |
| Colours | 2700K - 3000K - 4000K - 5700K - DYNAMIC WHITE - Red - Blue - Green | | | |
| CRI | 80> | | | |
| LED Chip | Luxeon Z | | | |
| No of LEDs per mtr | 20 | | | |
| Binning | 3 Step MacAdam | | | |
| Control | DALI - DMX - 0-10V - Phase | | | |
| Beam Angles | 10° - 26° - 45° - 49°x11° | | | |
| Lifetime @ LM80 | 50,000hrs @ 25°C | | | |
| Operating Temp | - 25°C to 50°C | | | |
| IP Rating | IP67 | | | |
| Cover/Lens | Toughened Clear Glass - Toughened Frosted Glass | | | |
| Finish | Silver Anodised Aluminium - Black - White | | | |
| Mounting | Fixed or Adjustable Brackets | | | |
| Weight | 2.2Kg per mtr | | | |

Photometrics

DETAILS UNDER DEVELOPMENT

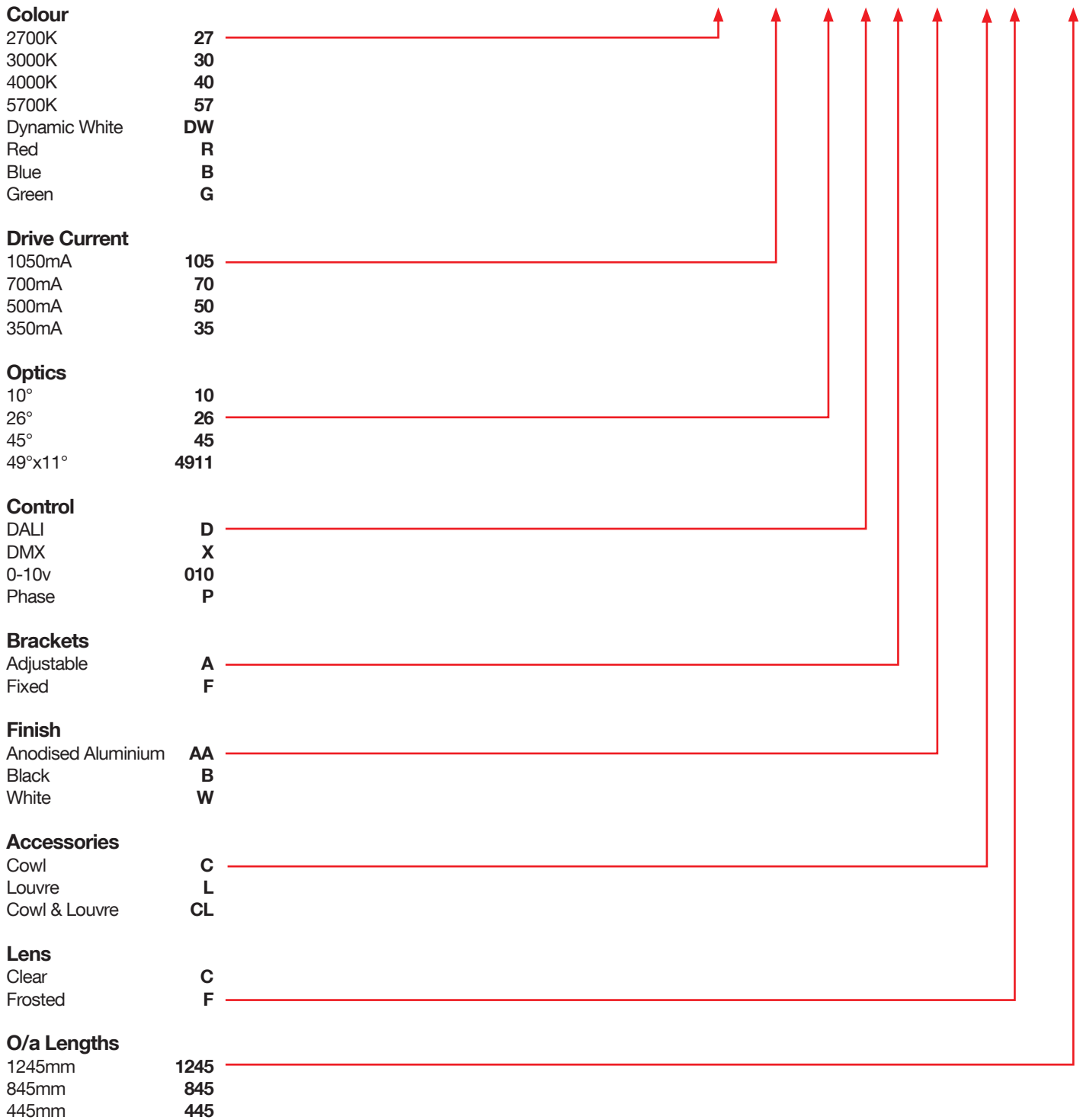
Specifications are subject to change without prior notice. Please refer to our website for the most up to date version.

ALPHAЕUS 2



Product Selector:

KL-ALP2-27-105-26-D-A-AA-C-F-1245



Please contact our sales team on **+44(0)113 263 9039** for further assistance.

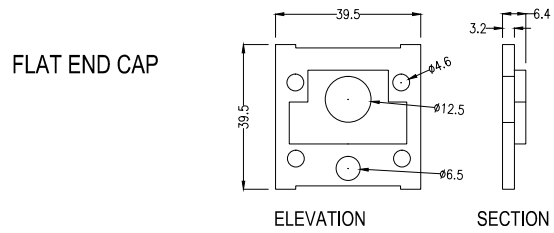
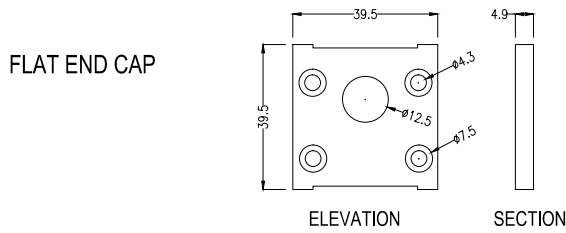
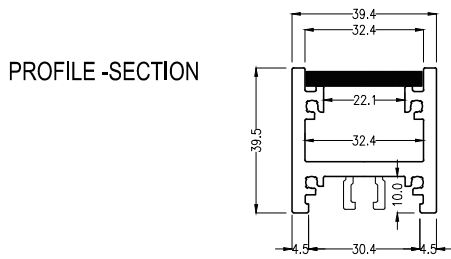


ALPHAЕUS 2

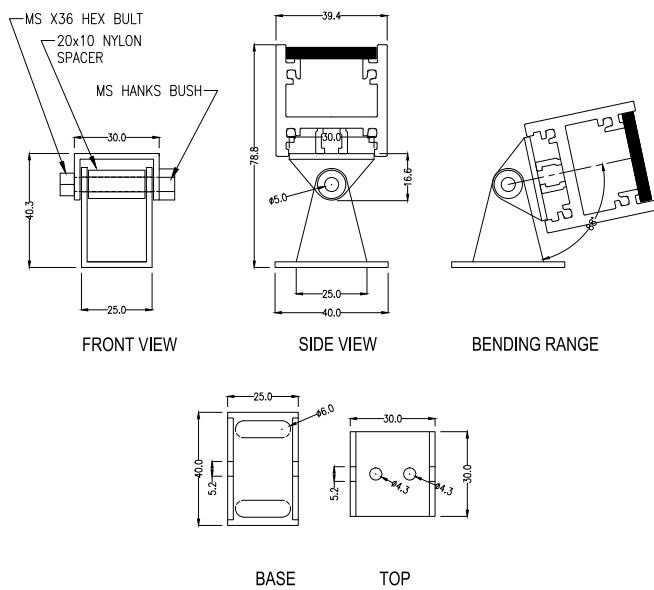


Specification Drawing

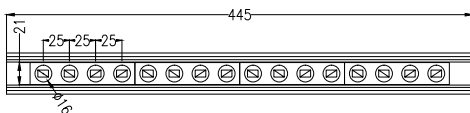
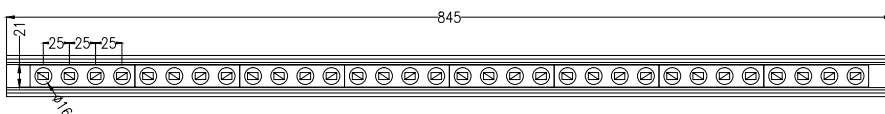
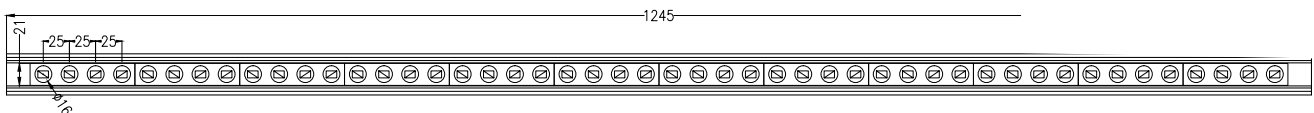
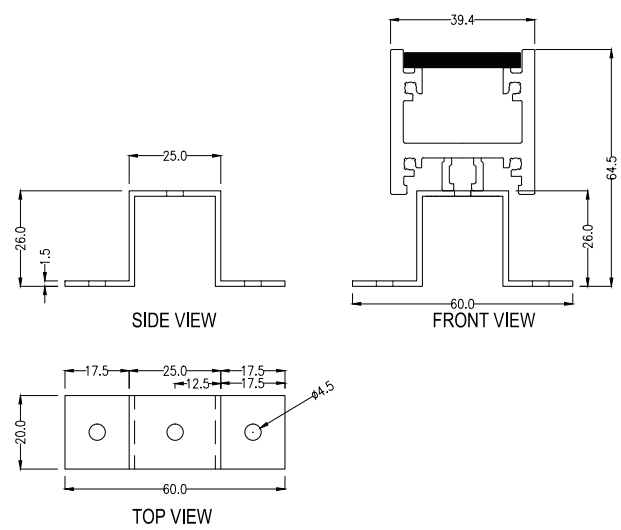
ALPHEUS 2



STAINLESS STEEL ADJUSTABLE BRACKET



STAINLESS STEEL FIXED BRACKET



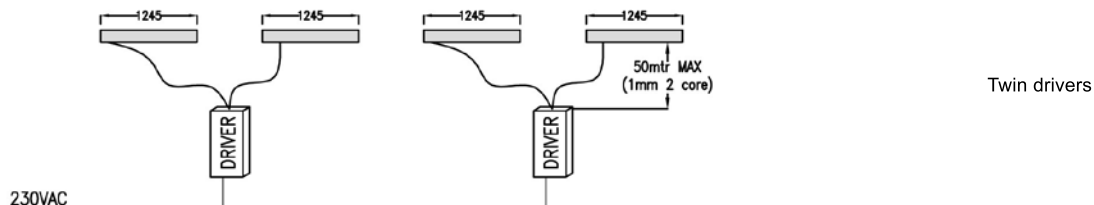
ALPHEUS 2



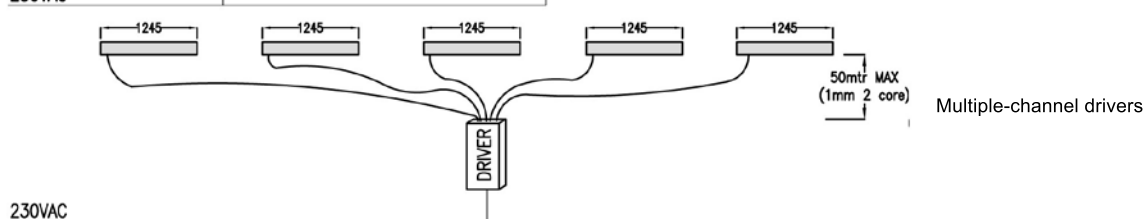
Typical Installations

ALPHAЕUS 2

Switched

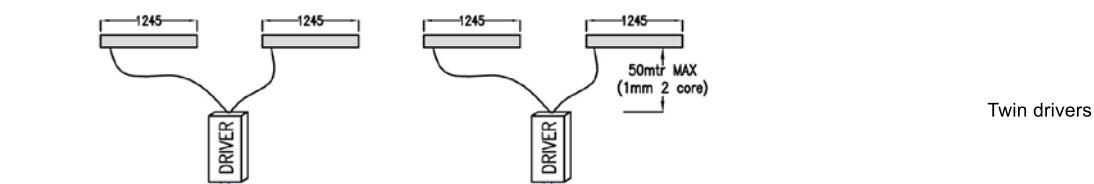


Twin drivers

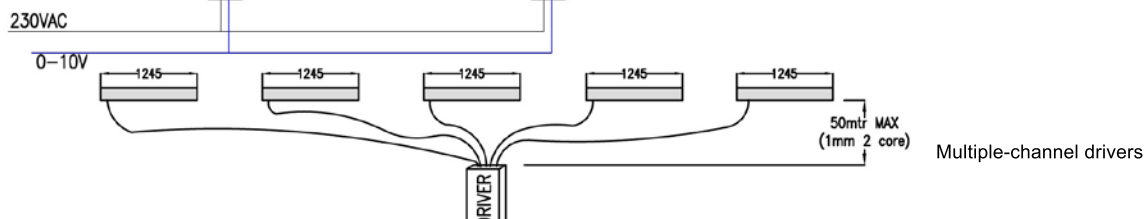


Multiple-channel drivers

0-10V

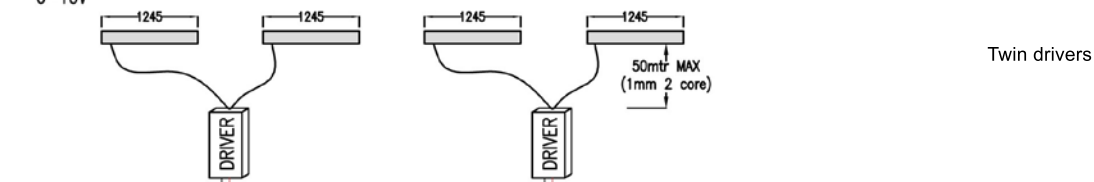


Twin drivers

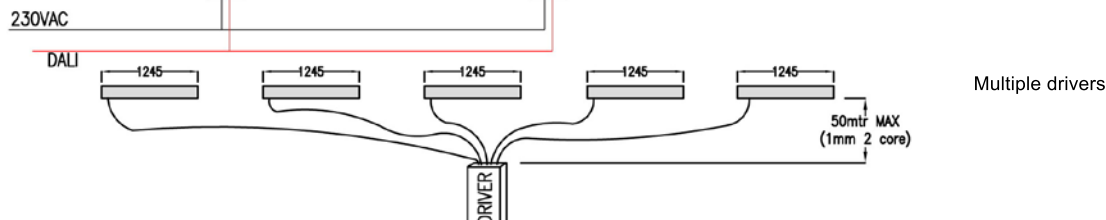


Multiple-channel drivers

DALI

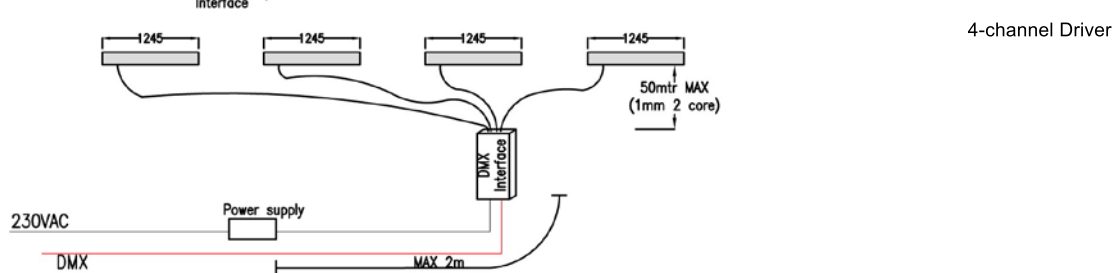


Twin drivers



Multiple drivers

DMX



4-channel Driver

