

Applications

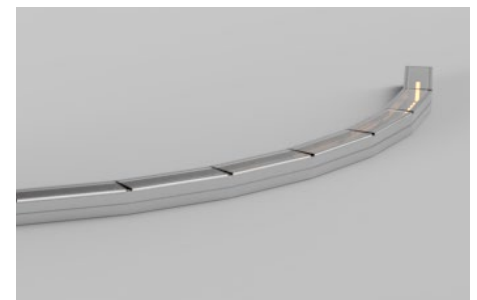
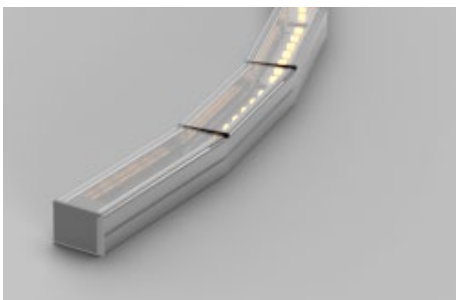
- Coves
- Furniture
- Back-lighting
- Hospitality
- Retail
- Office
- Residential

Features

- 3 step MacAdam
- A Selection of 2200K - 2500K - 2700K - 3000K - 3500K - 4000K - 5000K - 5700K
- 114 > 132 lumens per Watt
- CRI >80 - >90
- Osram Duris S2 or Luxeon LEDs
- 120° beam angle as standard - 12° Optic available
- 17W - 22W (24V)
- LM80 Lifetime 50,000 hrs
- Dimmable via DALI, 0-10V, DMX
- ECO friendly and Energy Saving

Benefits

- Improved colour consistency across large and small projects
- Greater flexibility to produce a large range of lengths.
- Extensive range of whites to suit all applications
- High lumen output
- Excellent Colour Rendering
- Highest quality Osram or Luxeon LEDs
- 2 power options for varying in-direct or direct lighting applications
- Excellent lumen maintenance over lifetime
- Reduced potential failure during handling with ESD protection
- ROHS compliant



KL-PRO-R-C-DW

Technical Information

Product Specification	High Power	Medium Power
Lumen Output (lm/m) based on 4000K	2880	2282
Power (W/m)	22	17
Efficacy based on 4000K	130	132
Input Voltage	24V	
Colours	2200K - 2500K - 2700K - 3000K - 3500K - 4000K - 5000K - 5700K	
CRI	>80 - >90	
LED Chip	Osram Duris S2 - Luxeon	
Binning	3 Step MacAdam	
Control	0-10V - DMX - DALI - Bluetooth	
Beam Angles	Opal Diffused - 12° - 120°	
Lifetime @ LM80	50,000hrs @ 25°C	
Operating Temp	- 25°C to 40°C	
IP Rating	IP20	
Cover/Lens	Clear - Opal	
Finish	Anodised Aluminium	
Mounting	Fixed or Adjustable Brackets	
Connection	300mm Cable to IP54 Connector	
Segment Lengths	50mm - 100mm	
Length	563mm	
Minimum Bend Radius	301mm	

KL-PRO-R-C-DW



Product Selector

KL-PRO-R-C-DW-17-27-50-80-D-C1

Power

22W **22**
 17W **17**

Colour

2200K **22**
 2500K **25**
 2700K **27**
 3000K **30**
 3500K **35**
 4000K **40**
 5000K **50**
 5700K **57**

Colour

2200K **22**
 2500K **25**
 2700K **27**
 3000K **30**
 3500K **35**
 4000K **40**
 5000K **50**
 5700K **57**

CRI

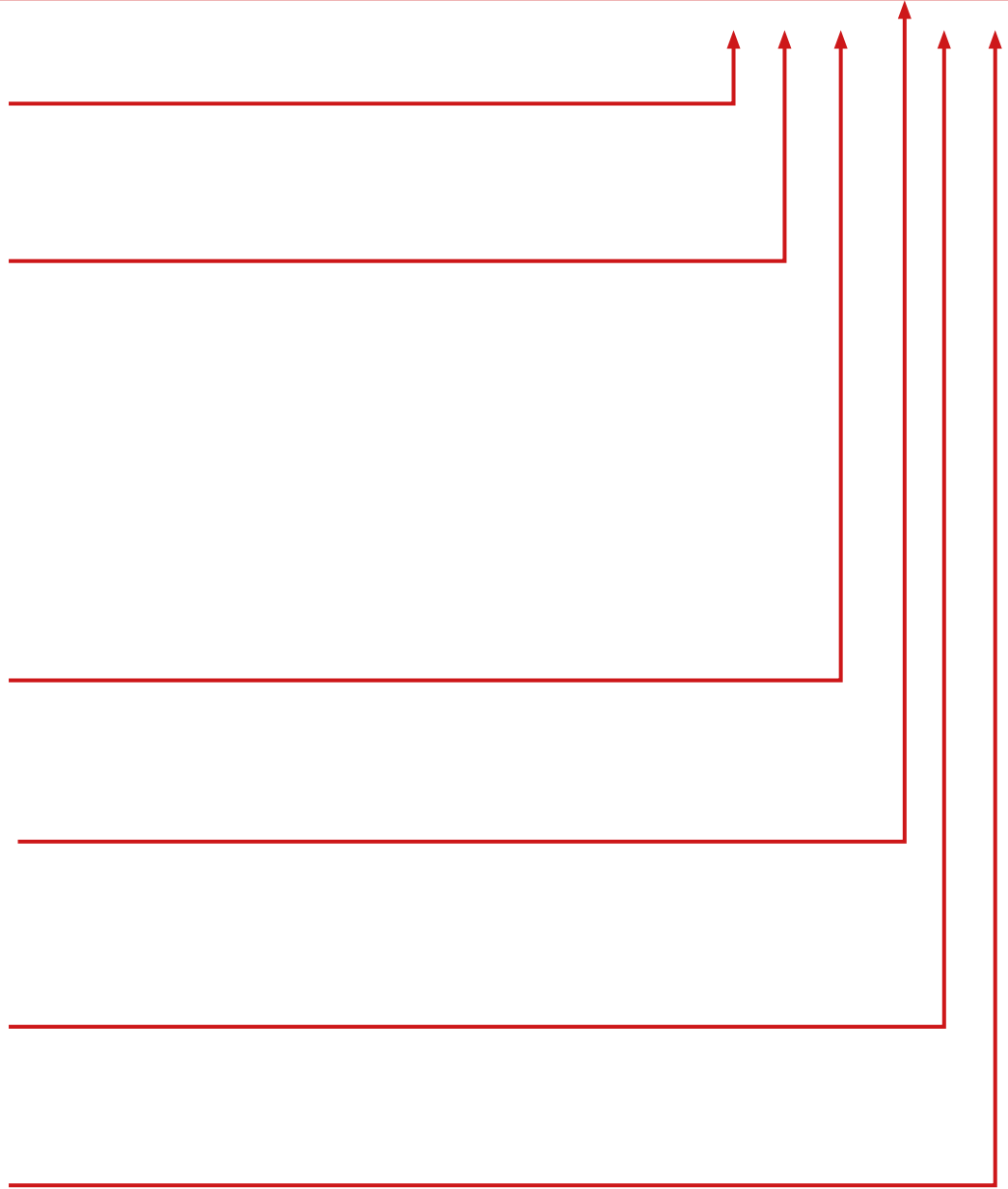
80 **80**
 90 **90**

Control

Switched **S**
 0-10V **010**
 DALI **D**
 DMX **X**
 Bluetooth **B**

Diffuser

Clear (120°) **C1**
 Clear (12°) **C2**
 Opal **O**



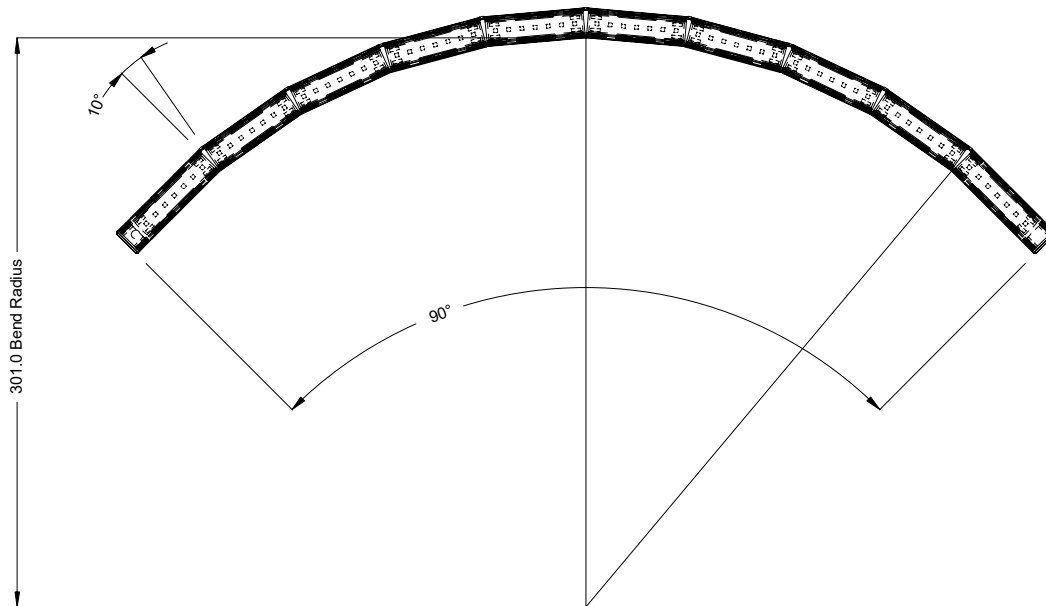
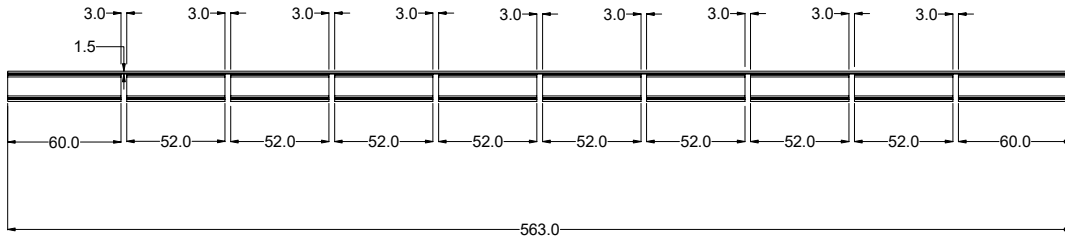
End cable entry as standard. Please contact our sales team to discuss your requirements.

KL-PRO-R-C-DW

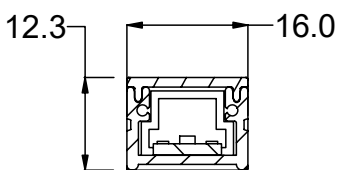


Specification Drawings

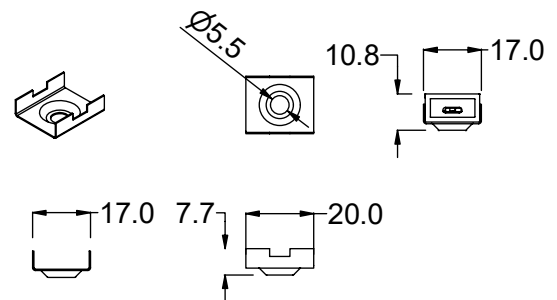
Profile Length and Bend Radius



Profile Cross section



Surface Mount Clip



Installation Warning

The maximum combined output when using both colour channels should not exceed 17W or the 22W. This can cause catastrophic failure and void warranty.



Please contact our sales team on **+44(0)113 263 9039** for further assistance

Specifications are subject to change without prior notice. Please refer to our website for most up to date version

KL-PRO-R-C-DW

Rev 1 - 06/20

