

Flexus 5 PVC

Single Colour Flexible LED



3-Year
Warranty



IP67
Rating



IP68
Rating



Flame
Resistant



Solvent
Resistant



Saltwater
Resistant



RoHS
Compliant



CE
Certified



UK Conformity
Assessed

Applications

- Counters
- Decorative
- Facades
- Landscapes

Features

- 3 sided, 260 degree light emitting surface
- 80CRI & 90CRI
- Vertical bend
- 300mm min bend diameter
- Interior or exterior
- IP67 as standard, IP68 available
- Power from one or both ends
- Environmentally friendly
- Energy efficient
- Solvent, Flame and salt resistant
- PVC material

Technical Information

	White	Red	Green	Blue	Amber
Power (W/m)	12	8	12	12	8
Lumen Output (lm/m)	Upto 800lm				
Material	PVC				
Bending	Vertical				
CCT	Red • Green • Blue • Amber • 2200K • 2700K • 3000K • 3500K • 4000K • 5700K				
CRI	80 • 90				
Control	Switched • 0-10V • DALI • DMX • Phase • Bluetooth				
Beam Angle	260°				
LED	Nichia • Epistar				
Binning	3 Step MacAdam				
Input Voltage (V)	24				
Max length (1 entry)	Red • Amber 15m White • Green • Blue 10m				
Cutting	Red • Amber 83mm White • Green • Blue 55mm				
IP Rating	IP67 • IP68				
Operating Ambient Temp	-20°C to 45°C				
Lifetime	>30,000hrs				
Connection	5mtr tail to bare end				

Product Code

FX5 - P - 1 - 2 - 3 - 4 - 5

Create your product code by choosing your specification from the product areas.

Final example codes are shown to the right.

Example Codes

FX5-P-827-VB-1E-68-XXXX

FX5-P-857-VB-1R-67-XXXX

1 CCT

2700K 90CRI	927	Red	R
3000K 90CRI	930	Green	G
3500K 90CRI	935	Blue	B
4000K 90CRI	940	Amber	A
2200K 80CRI	822		
2700K 80CRI	827		
3000K 80CRI	830		
3500K 80CRI	835		
4000K 80CRI	840		
5700K 80CRI	857		

2 Bend

Vertical VB

3 Cable Entry

1 End Feed	1E
1 Side Feed	1S
1 Rear Feed	1R
2 End Feed	2E
2 Side Feed	2S
2 Rear Feed	2R

4 IP Rating

IP67	67
IP68 Max 2m depth	68

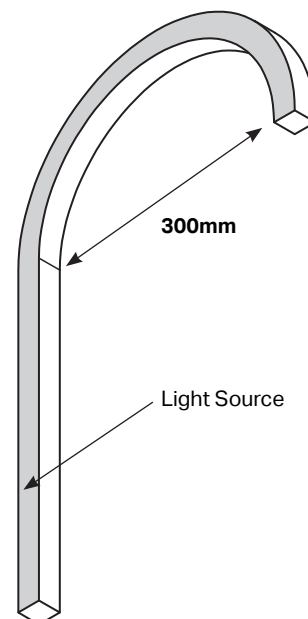
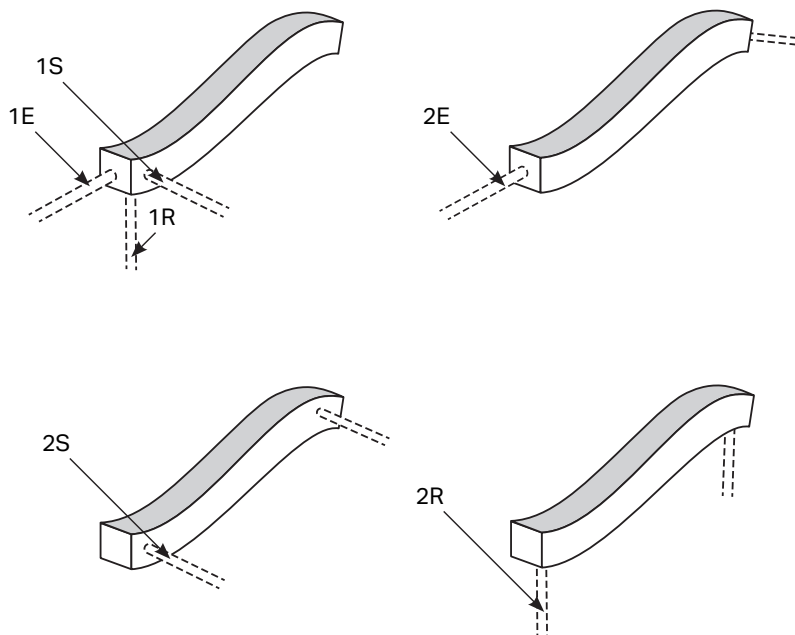
5 Length

XXXXmm XXXX

Cable Entry Options

! Assembly Caution

Min Bend Dia is 300mm



FX5-P-0522

Complies with EN60598-1 and pertinent regulations

Specifications are subject to change without prior notice. Please refer to our website for most up to date version.



Contact our sales team for further assistance

0113 263 9039

sales@kempslighting.com

kempslighting.com

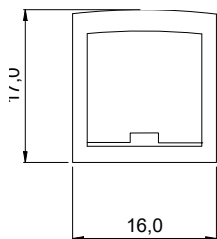


Flexus 5

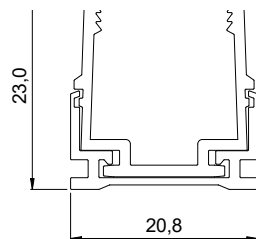
Fixing Accessories

Description	Kemps Code
Hybrid Aluminium & Clear Plastic Profile 2000mm	FX5-HBP-2000
Hybrid Aluminium & Clear Plastic Profile 1000mm	FX5-HBP-1000
Hybrid Aluminium & Clear Plastic Profile 500mm	FX5-HBP-0500
Hybrid Aluminium & Clear Plastic Profile 35mm	FX5-HBP-0035
Transparent Plastic Profile 2000mm (internal use only)	FX5-TPP-2000
Transparent Plastic Profile 1000mm (internal use only)	FX5-TPP-1000
Transparent Plastic Profile 500mm (internal use only)	FX5-TPP-0500
Transparent Plastic Profile 35mm (internal use only)	FX5-TPP-0035

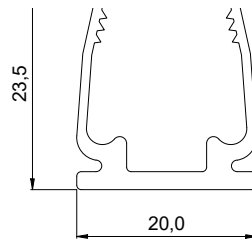
Specification Drawings



Flexus 5



Hybrid Mounting Profile



Transparent Plastic Profile
(internal use only)

Complies with EN60598-1 and pertinent regulations

Specifications are subject to change without prior notice. Please refer to our website for most up to date version.



Contact our sales team for further assistance

0113 263 9039

sales@kempslighting.com

kempsarchitecturallighting.com

