

Flexi Strip DIY

Installation guide



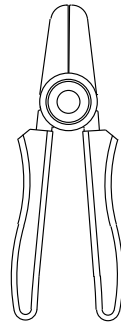
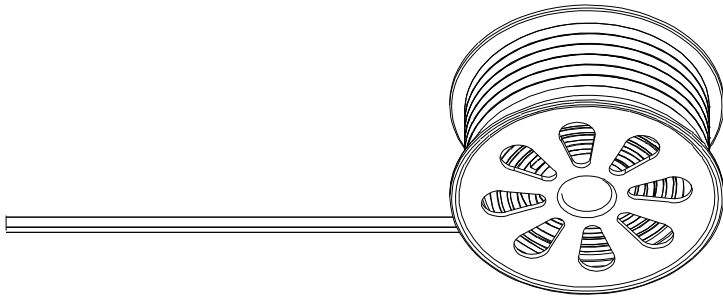
Contact our sales team for further assistance

0113 263 9039

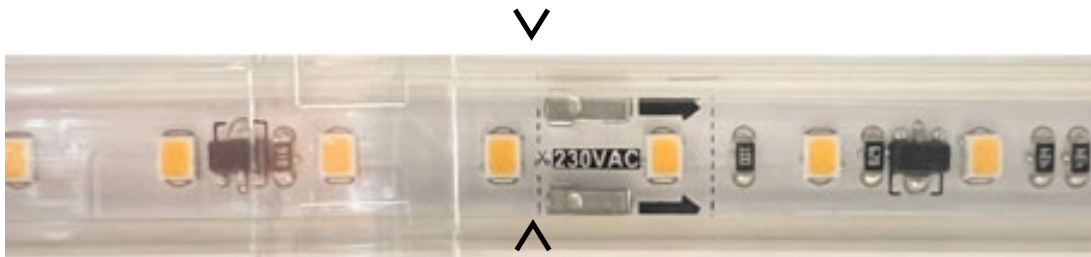
sales@kempslighting.com

kempsarchitecturallighting.com

How to cut the LED strip



Tools needed



1. Ensure the strip is not connected to any power outlet before cutting!
2. Look for the cutting marks (every 200mm) on the strip. This is identified with a scissor symbol.
3. Cut the strip over the perforated line.

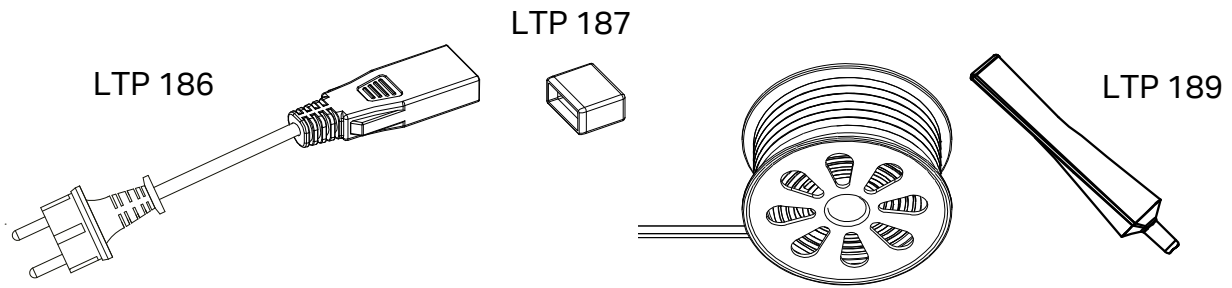
WARNING



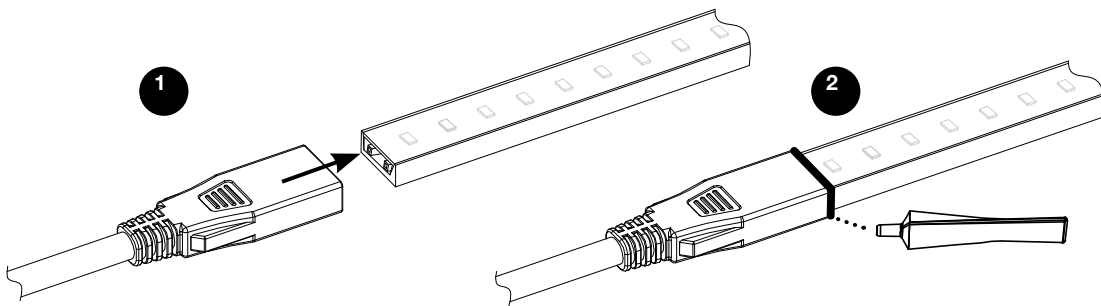
Risk of injury to persons or property

All work on the flexi strip must be carried out by an authorized electrician.

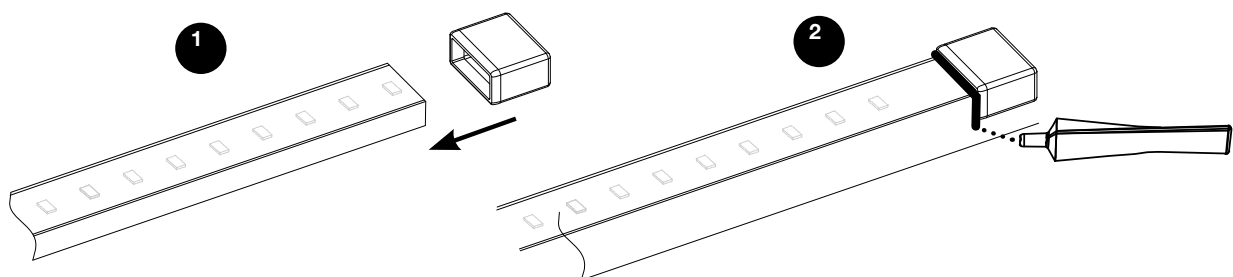
Connecting an AC plug and End-cap



Parts Needed

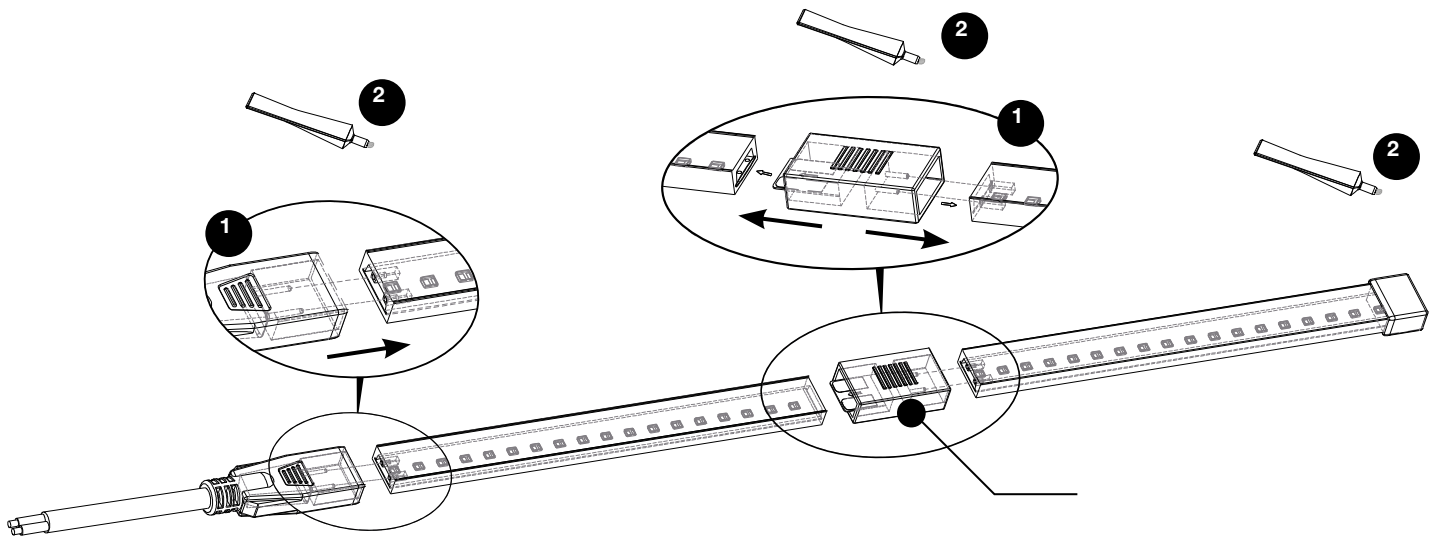


1. Connect the AC-plug (LTP 186) to the strip. Ensure the connector lines up before applying force.
 2. Seal the area between the strip and the plug with glue. Wait at least 30 minutes for the glue to dry.
-



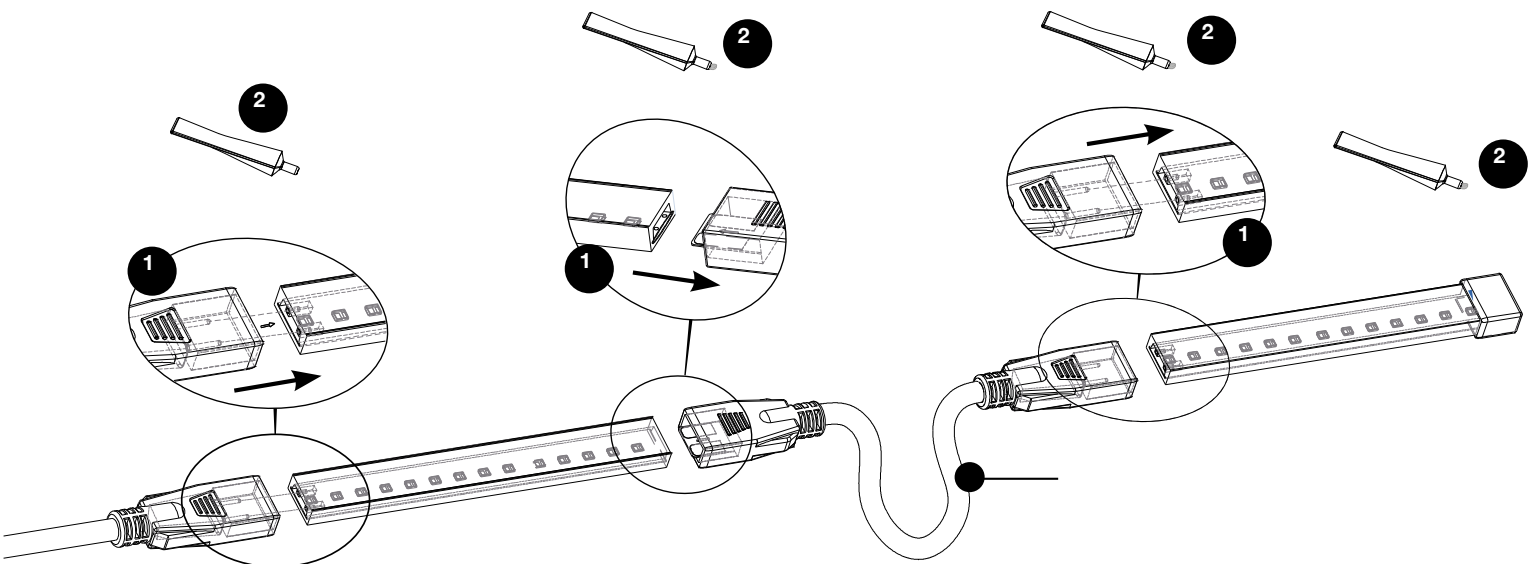
1. Attach the blank end cap (LTP 187) to the strip.
2. Seal the transition between the strip and the end-cap with glue and wait at least 30 minutes for the glue to dry.

Connecting a Splice



1. Connect the plug to the strip and make sure the connectors line up before applying force.
2. Seal the area between the strip and the plug with the glue and leave for at least 30 minutes to dry.

Connecting a 15cm Jumper



1. Connect the plug to the strip and make sure the connectors line up before applying force.
2. Seal the area between the strip and the plug with the glue and leave for at least 30 minutes to dry.