

Proteus N

Linear LED



Applications

- Walls
- Ceilings
- Plaster in
- Stoneware surfaces

Benefits

- Various colour temperatures available
- Various lumen outputs
- Homogenous appearance
- Dimmable
- Remote gear
- Multiple lengths available to suit

Features

- 2200K - 2400K - 2700K - 3000K - 4000K
- 5W - 9W - 15W - 19W
- 80 & 90 CRI
- IP54
- 50mm cut increments
- Switched – 0-10V – DALI – Phase – DMX – Bluetooth Casambi
- 5yr Warranty
- Re-use luminaire

Technical Information

Power (W/m)	5	9	15	19
Lumen Output (lm/m based on 4000K)	454	838	1334	1666
Efficacy (lm/W) Based on 4000K	91	93	89	88
Input (V)	24			
CCT	2200K • 2400K • 2700K • 3000K • 4000K			
CRI	>80 • >90			
Binning	3 Step MacAdam Elipse			
Control	Switched • 0-10V • DALI • Phase • DMX • Bluetooth			
Beam angle	120°			
Lifetime (LM80)	50,000hrs @25°C			
Operating Temp	-25°C to 55°C			
IP Rating	IP54			
Diffuser	Opal			
Finish	Black • Signal White • Grey • Anodised Aluminium • Custom RAL			
Mounting	Recessed			

Product Code

PRO - N - 1 - 2 - 3 - 4 - 5 - 6

Example Codes

PRO-N-15-827-O-54-9005-XXXX
PRO-N-5-840-O-54-9003-XXXX

Create your product code by choosing your specification from the product areas.

Final example codes are shown to the right.

1 Power

19W	19
15W	15
9W	9
5W	5

2 CCT

	>80CRI	>90CRI		>80CRI	>90CRI
2200K	822	N/A	3000K	830	930
2400K	824	924	4000K	840	940
2700K	827	927			

3 Diffuser

Opal	0
------	----------

4 IP Rating

IP54	54
------	-----------

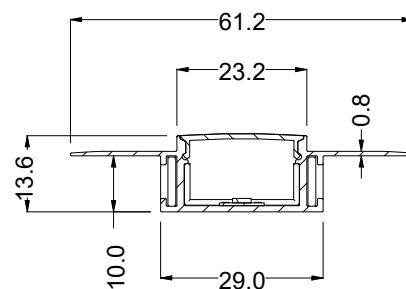
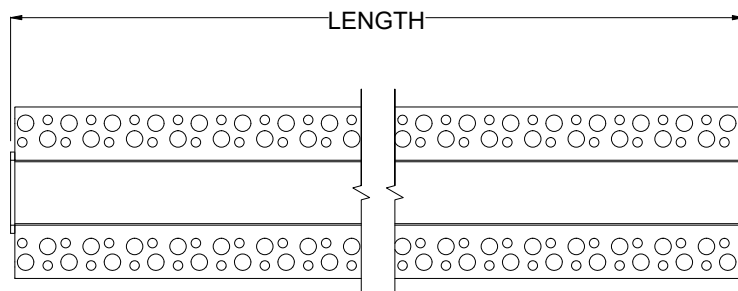
5 Finish

Jet Black	9005
Signal White	9003
Grey	9006
Anodised Aluminium	AA
Custom	RAL#

6 Length

XXXXmm	XXXX
--------	-------------

Specification Drawings



Each fitting to be supplied with a 1 mtr tail to bare end (24V)

PRO-N-0122

Complies with EN60598-1 and pertinent regulations

Specifications are subject to change without prior notice. Please refer to our website for most up to date version.



Contact our sales team for further assistance

0113 263 9039

sales@kempsonlighting.com

kempsonarchitecturallighting.com