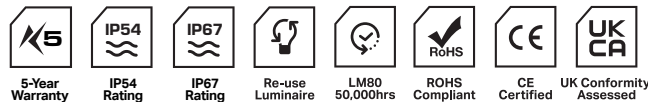


# Proteus RXL - RGBW

RGBW Colour Changing Linear LED



## Applications

- Furniture
- Handrail
- Decorative
- Cove

## Benefits

- Clear or Opal diffuser options
- Multiple lengths from 189mm - 2858mm
- Internal applications
- Maintainable

## Features

- RGBW
- 19.2W per mtr
- 80 CRI
- 120° Beam angle
- IP54 - IP67
- 167mm cut increments
- DALI - DMX - Bluetooth
- 5yr Warranty
- Re-use luminaire

## Technical Information

<b>Power (W/m)</b>	19.2 (all 4 colours @100%)
<b>Lumen Output (lm/m)</b>	Red 78 • Green 226 • Blue 48 • White 882
<b>Input</b>	24V
<b>Colour</b>	RGBW
<b>CRI</b>	80
<b>LED Chip</b>	Luxeon
<b>Binning</b>	3 Step MacAdam Ellipse
<b>Control</b>	DALI • DMX • Bluetooth
<b>Beam angle</b>	120°
<b>Lifetime (LM80)</b>	50,000hrs @25°C
<b>Operating Temp</b>	-25°C to 55°C
<b>IP Rating</b>	IP54 • IP67
<b>Diffuser</b>	Opal • Clear
<b>Mounting</b>	Fixed • Adjustable
<b>Multiple lengths available</b>	189mm - 2858mm

## Product Code

### PRO - RXL - RGBW - 1 - 2 - 3 - 4 - 5

Create your product code by choosing your specification from the product areas.

Final example codes are shown below.

*Example Codes*

**PRO-RXL-RGBW-19.2-C-54-F-XXXX**  
**PRO-RXL-RGBW-19.2-O-67-A-XXXX**

#### 1 Power

19.2W                      **19.2**

#### 3 IP Rating

IP54                      **54**  
 IP67                      **67**

#### 2 Diffuser

Clear 120°                      **C**  
 Opal                              **O**

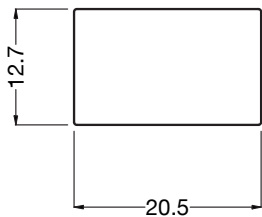
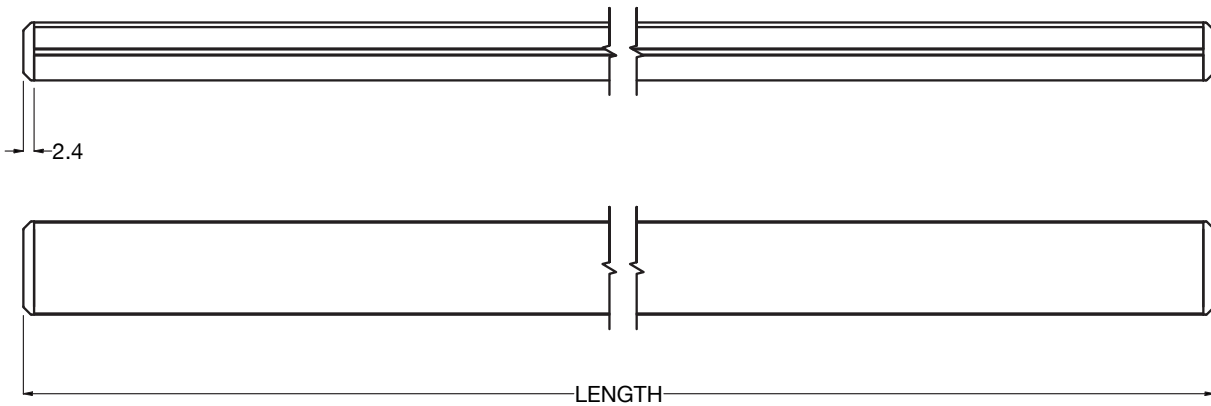
#### 4 Mounting

Fixed                              **F**  
 Adjustable                      **A**

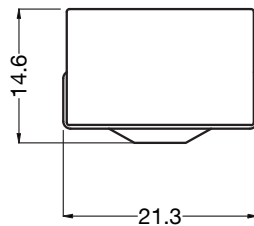
#### 6 Length

XXXXmm                      **XXXX**

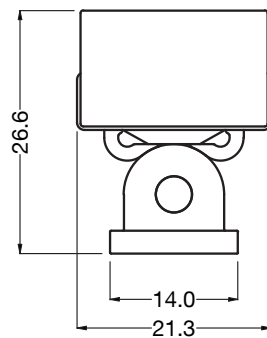
## Specification Drawings



PROFILE ONLY



PROFILE WITH  
FIXED BRACKET



PROFILE WITH  
ADJUSTABLE BRACKET

Fittings are provided with end cable entry as standard. Extension cable with female socket connector can be purchased separately with the below product code(s).

5 core M12 Female extension lead 10000mm - **CA043**

PRO-RXL-RGBW-0822

Complies with EN60598-1 and pertinent regulations

Specifications are subject to change without prior notice. Please refer to our website for most up to date version.



**Contact our sales team for further assistance**

0113 263 9039

sales@kempslighting.com

kempslighting.com