

# Flexus 10 Silicone

Single Colour Flexible LED



## Applications

- Landscapes
- Pools
- Facades

## Features

- High quality homogenous light
- Vertical bend
- 80 CRI & 90 CRI
- 400mm min bend diameter
- Exterior use/under water
- IP68
- Power from one or both ends
- Environmentally friendly
- Energy efficient
- UV resistant
- Silicone material

## Technical Information

|                               |   |      |
|-------------------------------|---|------|
| <b>Power (W/m)</b>            | 12  | 16.5 |
| <b>Lumen Output (lm/m)</b>    | 950   | 1400 |
| <b>Material</b>               | Silicone  |      |
| <b>Bending</b>                | Vertical  |      |
| <b>CCT</b>                    | 2200K • 2700K • 3000K • 4000K                     |      |
| <b>CRI</b>                    | 80 • 90   |      |
| <b>Control</b>                | Switched • 0-10V • DALI • DMX • Phase • Bluetooth |      |
| <b>Beam Angle</b>             | 116°  |      |
| <b>LED</b>                    | Nichia  |      |
| <b>Binning</b>                | 3 Step MacAdam                                    |      |
| <b>Input Voltage (V)</b>      | 24  |      |
| <b>Max length (1 entry)</b>   | 15mtr (12W) • 10mtr (16.5W)                       |      |
| <b>Cutting</b>                | 50mm  |      |
| <b>IP Rating</b>              | IP68  |      |
| <b>IK Rating</b>              | IK10  |      |
| <b>Operating Ambient Temp</b> | -40°C to 55°C                                     |      |
| <b>Lifetime</b>               | >50,000hrs  |      |
| <b>Connection</b>             | 5mtr tail to bare end                             |      |

## Product Code

### FX10-S - 1 - 2 - 3 - 4 - 5 - 6

Create your product code by choosing your specification from the product areas.

Final example codes are shown to the right.

Example Codes

FX10-S-827-12-VB-1E-68-XXXX

FX10-S-840-16.5-VB-S-68-XXXX

#### 1 CCT

|             |            |             |            |
|-------------|------------|-------------|------------|
| 2200K 80CRI | <b>822</b> | 2200K 90CRI | <b>922</b> |
| 2700K 80CRI | <b>827</b> | 2700K 90CRI | <b>927</b> |
| 3000K 80CRI | <b>830</b> | 3000K 90CRI | <b>930</b> |
| 4000K 80CRI | <b>840</b> | 4000K 90CRI | <b>940</b> |

#### 2 Power

|       |             |
|-------|-------------|
| 12W   | <b>12</b>   |
| 16.5W | <b>16.5</b> |

#### 3 Bend

|          |           |
|----------|-----------|
| Vertical | <b>VB</b> |
|----------|-----------|

#### 4 Cable Entry

|             |           |
|-------------|-----------|
| 1 End Feed  | <b>1E</b> |
| 1 Side Feed | <b>1S</b> |
| 1 Rear Feed | <b>1R</b> |
| 2 End Feed  | <b>2E</b> |
| 2 Side Feed | <b>2S</b> |
| 2 Rear Feed | <b>2R</b> |

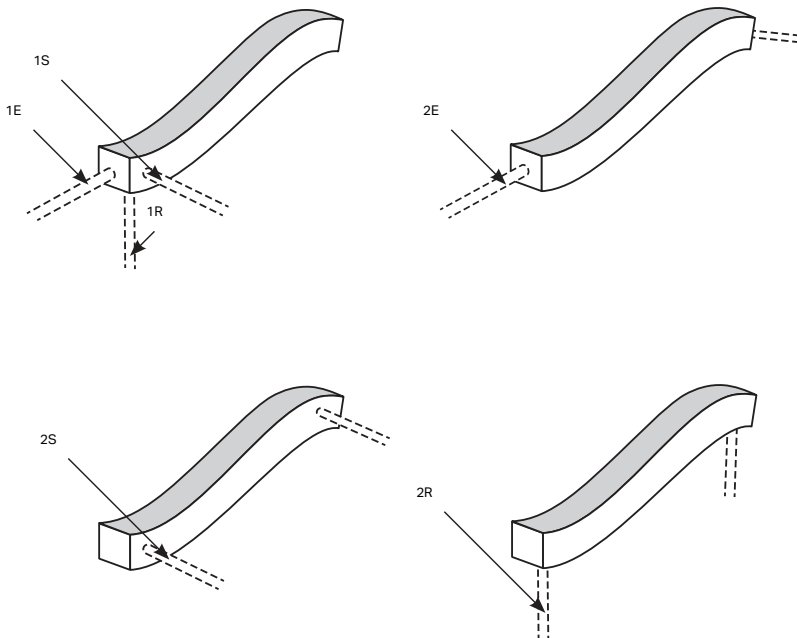
#### 5 IP Rating

|                   |           |
|-------------------|-----------|
| IP68 Max 5m depth | <b>68</b> |
|-------------------|-----------|

#### 6 Length

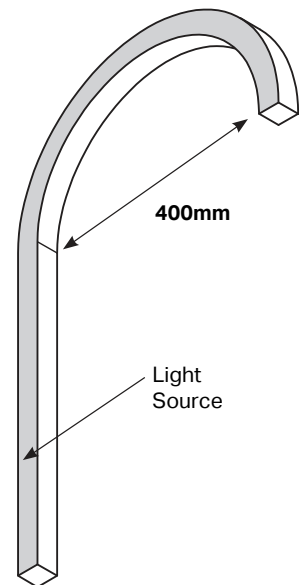
|        |             |
|--------|-------------|
| XXXXmm | <b>XXXX</b> |
|--------|-------------|

## Cable Entry Options



## ⚠ Assembly Caution

Min Bend Dia is **400mm**



Complies with EN60598-1 and pertinent regulations

Specifications are subject to change without prior notice. Please refer to our website for most up to date version.



Contact our sales team for further assistance

0113 263 9039

sales@kempsonlighting.com

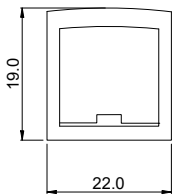
kempsonarchitecturallighting.com

# Flexus 10

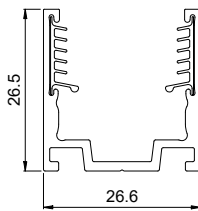
## Fixing Accessories

| Description                               | Kemps Code           |
|---|----------------------|
| Serrated Aluminium Profile 2000mm         | <b>FX10-SAP-2000</b> |
| Serrated Aluminium Profile 1000mm         | <b>FX10-SAP-1000</b> |
| Serrated Aluminium Profile 500mm          | <b>FX10-SAP-0500</b> |
| Serrated Aluminium Profile 20mm           | <b>FX10-SAP-0020</b> |
| Flanged Serrated Aluminium Profile 2000mm | <b>FX10-FSA-2000</b> |
| Flanged Serrated Aluminium Profile 1000mm | <b>FX10-FSA-1000</b> |
| Flanged Serrated Aluminium Profile 500mm  | <b>FX10-FSA-0500</b> |
| Flanged Serrated Aluminium Profile 20mm   | <b>FX10-FSA-0035</b> |

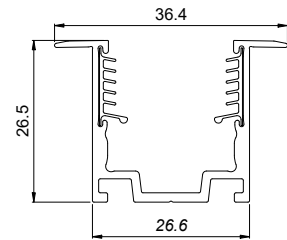
## Specification Drawings



Flexus 10



Serrated  
Aluminium Profile

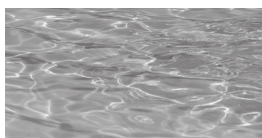


Serrated Recessed

## Product Lumen data

| CCT   | CRI | WATTS/MTR | LUMENS/MTR |
|-------|-----|-----------|------------|
| 2200K | 80  | 12        | 900        |
| 2700K | 80  | 12        | 920        |
| 3000K | 80  | 12        | 920        |
| 4000K | 80  | 12        | 950        |
| 2200K | 80  | 16.5      | 1200       |
| 2700K | 80  | 16.5      | 1300       |
| 3000K | 80  | 16.5      | 1300       |
| 4000K | 80  | 16.5      | 1400       |

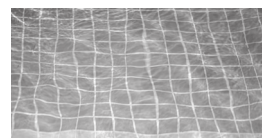
### Underwater Applications



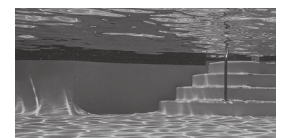
Fresh Water



Sea Water  
(Salinity<4%)



Swimming Pool  
(Chlorine<2PPM)



Swimming Pool  
(Ozone<0.3PPM)

Complies with EN60598-1 and pertinent regulations

Specifications are subject to change without prior notice. Please refer to our website for most up to date version.



Contact our sales team for further assistance

0113 263 9039

[sales@kempslighting.com](mailto:sales@kempslighting.com)

[kempsasslighting.com](http://kempsasslighting.com)