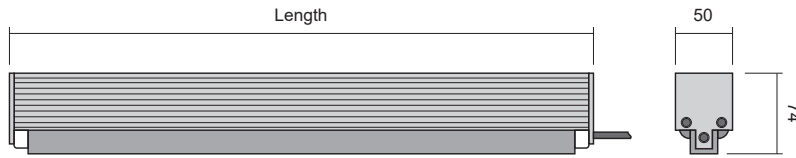


Mersus 2

Installation Guide

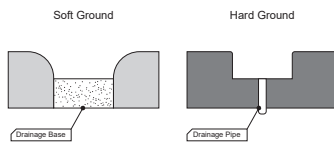


Dimensions



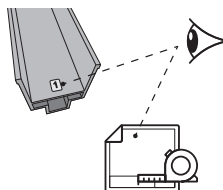
Installation

- 1 Prepare ground for product installation. The product must be installed onto a suitable* drainage surface, examples for hard and soft ground:

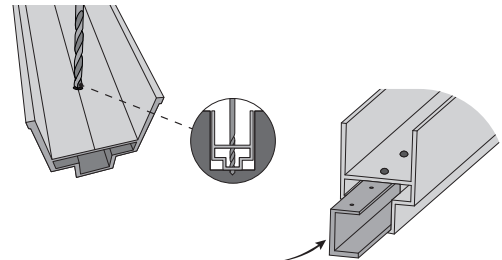


*Suitability must be checked before product installation by use of the following test: Completely fill the ground mounting channel with water, and allow to drain. The channel must be completely drained within 10 minutes.

- 2 Study installation drawing carefully; position fixtures accordingly. Check all dimensions and positions are correct.

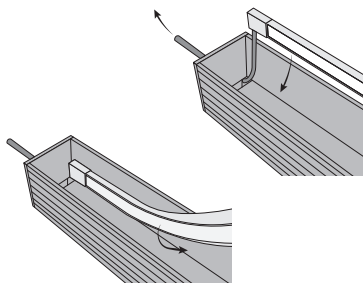


- 3 Use pre-drilled holes to drill ground fixing points, secure in ground with adequate fixings*. Drill at least 3 additional holes for drainage in each section.



Fix multiple lengths together using joining plates supplied.

- 4 Fix both lengths of LEDs within the profile, one at a time, observing cable entry positions. Push the cable through the site containment to the driver location (see driver datasheet for connections).

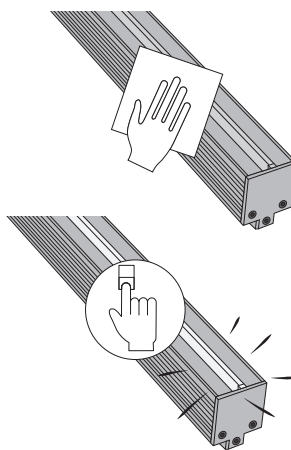


CRITICAL: Take care not to damage LED strip during installation. Failure to do so will void product warranty.

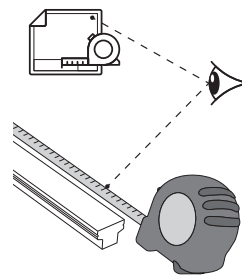
Do Not:

- Twist, stretch or pull the LED strip
- Exceed a localised bend over 15°
- Bend in more than one axis
- Allow to sag while handling

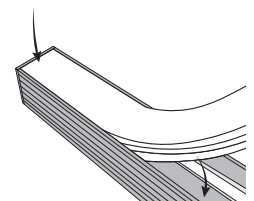
- 5 Clean out all debris and dirt from within the profile. Switch on and test before installing the Silicone diffuser. If there are any issues, check the wiring and the LED. Further technical support at info@kempslighting.com.



- 6 Unpack the Silicone diffuser (soft protective gloves recommended). Avoid contact with the floor or dirt. Measure each length to ensure you have the right piece.

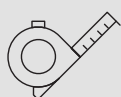


- 7 Final clean of the profile and ensure the LED is firmly sat in position along the full length of the profiles. Apply a liberal spray of 90% water/10% washing up liquid mix to the profile, to facilitate silicone diffuser installation. Position the Silicone at the start position (end or corner), gently push the diffuser into position whilst ensuring it is flush with the housing without any undulation.

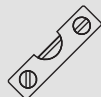


If a hump appears then exert pressure until this has disappeared along the length.

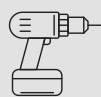
Tool Requirement



Tape Measure



Spirit Level



Drill - With Bits & Fixings



Screw Drivers



Hex Keys



- Read the instructions for installation and commissioning.
- Pass the instructions to the customer for safekeeping.
- Do not remove the label of the luminaire.
- The installation as well as the replacement of light source and cables may only be performed by a trained electrical specialist, the manufacturer or a service technician authorised by the manufacturer.
- For improper installation or any subsequent change to the luminaire no liability is accepted.
- To protect the surface from dirt and fingerprints, we recommend the use of protective gloves during installation.
- The disposal of the system must be carried out on the disposal of electronic products in accordance with the WEEE Directive (Waste Electrical and Electronic Equipment).
- In order to answer technical queries, please contact our customer service respectively and our distributors. Please send your request to info@kempslighting.com



- Luminaires should be cleaned in conjunction with the design maintenance program.
- Clean the silicone diffuser with a damp cloth and diluted washing up liquid or standard household multi surface cleaner. Wipe down with a clean dry cloth removing residue to prevent possible slip hazards.