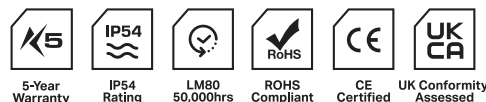


# Proteus U90

Linear LED



## Applications

- Cove
- Furniture

## Benefits

- Various colour temperatures available
- Multiple lengths available to suit
- Various lumen outputs
- Dimmable
- Colour rendering options
- Remote gear
- Homogenous appearance
- 5yr Warranty

## Features

- 16mm x 16mm slim corner profile
- 120 Leds per mtr
- 2200K - 2400K - 2700K - 3000K 4000K
- Surface mounted with clips
- 80 & 90 CRI
- IP54

## Technical Information

<b>Power (W/m)</b>	5	9	15	19
<b>Lumen Output (lm/m)</b> Based on 4000K 80CRI	454	838	1334	1666
<b>Efficacy (lm/W)</b> Based on 4000K Opal	91	93	89	88
<b>Input (V)</b>	24			
<b>CCT</b>	2200K • 2400K • 2700K • 3000K • 4000K			
<b>CRI</b>	>80 • >90			
<b>Binning</b>	3 Step MacAdam Elipse			
<b>Control</b>	Switched • 0-10V • DALI • Phase • DMX • Bluetooth			
<b>Beam angles</b>	160°			
<b>Lifetime (LM80)</b>	50,000hrs @25°C			
<b>Operating Temp</b>	-25°C to 55°C			
<b>IP Rating</b>	IP54			
<b>Diffuser</b>	Opal			
<b>Finish</b>	Black • Signal White • Grey • Anodised Aluminium • Custom RAL			
<b>Mounting</b>	Surface			
<b>Lengths</b>	50mm increments			

## Product Code

### PRO - U90 - 1 - 2 - 3 - 4 - 5

Create your product code by choosing your specification from the product areas.

Final example codes are shown to the right.

*Example Codes*

**PRO-U90-9-827-O-54-XXXX**

**PRO-U90-19-830-O-54-XXXX**

#### 1 Power

19W	<b>19</b>
15W	<b>15</b>
9W	<b>9</b>
5W	<b>5</b>

#### 2 CCT

	>80CRI	>90CRI		>80CRI	>90CRI
2200K	<b>822</b>	<b>N/A</b>	3000K	<b>830</b>	<b>930</b>
2400K	<b>824</b>	<b>924</b>	4000K	<b>840</b>	<b>940</b>
2700K	<b>827</b>	<b>927</b>			

#### 3 Diffuser

Opal	<b>0</b>
------	----------

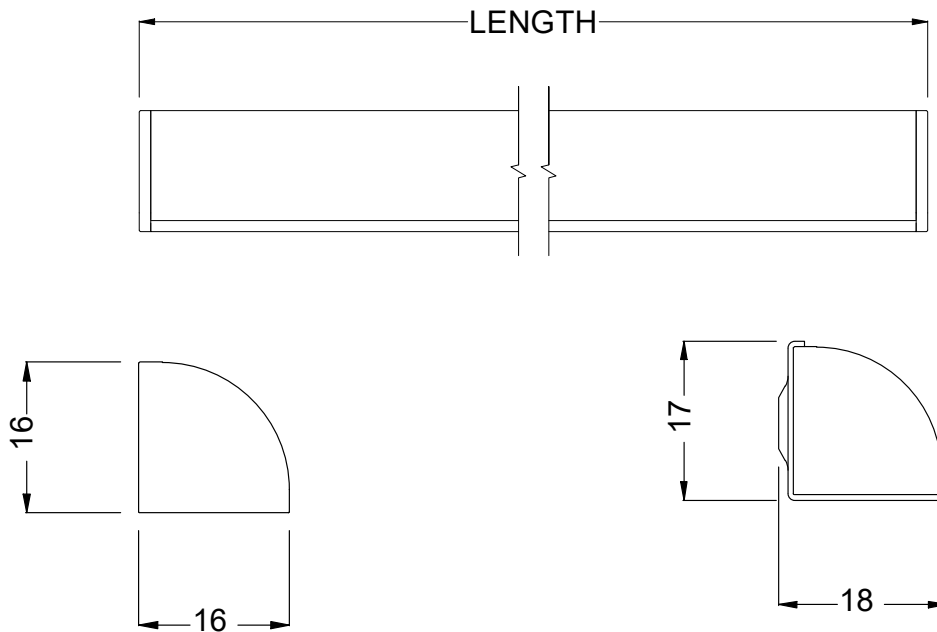
#### 4 IP Rating

IP54	<b>54</b>
------	-----------

#### 5 Length

XXXXmm	<b>XXXX</b>
--------	-------------

## Specification Drawings



Fittings are provided with end cable entry as standard. Extension cable with female socket connector can be purchased separately with the below product code.

2 core IP54 5000mm Proteus female extension lead - **CA006**

Complies with EN60598-1 and pertinent regulations

Specifications are subject to change without prior notice. Please refer to our website for most up to date version.



**Contact our sales team for further assistance**

0113 263 9039

sales@kempslighting.com

kempslighting.com

## Product Lumen Data

---

CCT	Watts	Opal Diffuser	
		Lumens/Mtr	Lumen/Watt
2200K - 80CRI	5	318	64
2400K - 80CRI		343	69
2400K - 90CRI		290	58
2700K - 80CRI		390	78
2700K - 90CRI		330	66
3000K - 80CRI		410	82
3000K - 90CRI		347	69
4000K - 80CRI		454	91
4000K - 90CRI		363	73
2200K - 80CRI		9	587
2400K - 80CRI	632		70
2400K - 90CRI	538		60
2700K - 80CRI	762		85
2700K - 90CRI	648		72
3000K - 80CRI	800		89
3000K - 90CRI	680		76
4000K - 80CRI	838		93
4000K - 90CRI	712		79
2200K - 80CRI	15		927
2400K - 80CRI		991	66
2400K - 90CRI		896	60
2700K - 80CRI		1207	80
2700K - 90CRI		1026	68
3000K - 80CRI		1270	85
3000K - 90CRI		1079	72
4000K - 80CRI		1334	89
4000K - 90CRI		1133	76
2200K - 80CRI		19	1159
2400K - 80CRI	1238		65
2400K - 90CRI	1214		64
2700K - 80CRI	1508		79
2700K - 90CRI	1279		67
3000K - 80CRI	1588		84
3000K - 90CRI	1346		71
4000K - 80CRI	1666		88
4000K - 90CRI	1414		74



Contact our sales team for further assistance

0113 263 9039

sales@kempsonlighting.com

kempsonarchitecturallighting.com