

Proteus SXL - RGBW

RGBW Colour Changing Linear LED



5-Year
Warranty



IP54
Rating



IP67
Rating



Re-use
Luminaire



LM80
50,000hrs



RoHS
Compliant



CE
Certified



UK CA
Assessed

Applications

- Furniture
- Cove
- Display

Benefits

- Various colours available
- Maintainable
- Clear or Opal diffuser options
- 5yr Warranty
- Internal applications
- Re-use luminaire
- Multiple lengths from 127mm - 2927mm

Features

- Corner mounted fixture
- DALI - DMX - Bluetooth
- RGBW
- 120° Beam angle
- 19.2W per mtr
- IP54 - IP67
- 80 CRI
- 100mm cut increments

Technical Information

Power (W/m)	19.2 (all 4 colours @100%)
Lumen Output (lm/m)	Red 78 • Green 226 • Blue 48 • White 882
Input	24V
Colour	RGBW
CRI	80
LED Chip	Luxeon
Binning	3 Step MacAdam Elipse
Control	DALI • DMX • Bluetooth
Beam angle	120°
Lifetime (LM80)	50,000hrs @25°C
Operating Temp	-25°C to 55°C
IP Rating	IP54 • IP67
Diffuser	Opal • Clear
Mounting	Fixed
Multiple lengths available	127mm - 2927mm

Product Code

PRO - SXL - RGBW - 1 - 2 - 3 - 4 - 5

Create your product code by choosing your specification from the product areas.

Final example codes are shown below.

Example Codes

PRO-SXL-RGBW-19.2-C-54-F-XXXX

PRO-SXL-RGBW-19.2-O-54-A-XXXX

1 Power

19.2W

19.2

3 IP Rating

IP54

54

IP67

67

2 Diffuser

Clear 120°

C

Opal

O

4 Mounting

Fixed

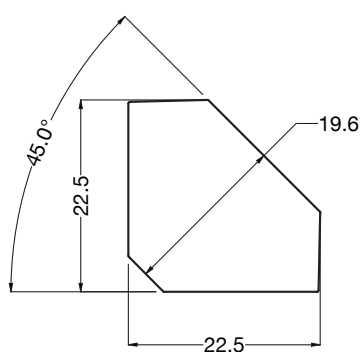
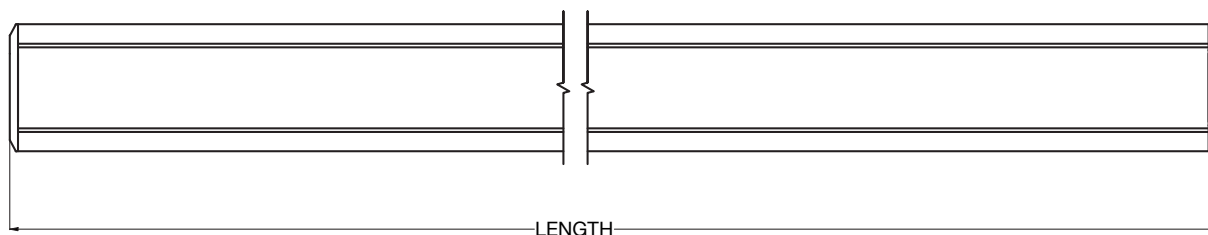
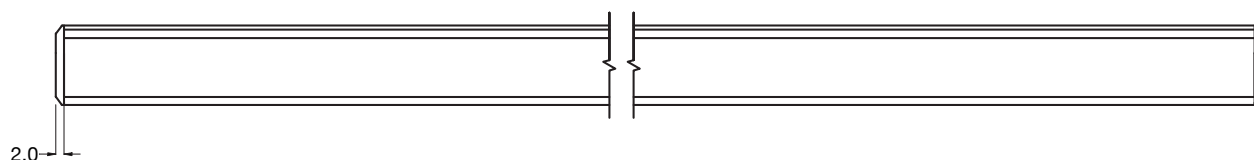
F

5 Length

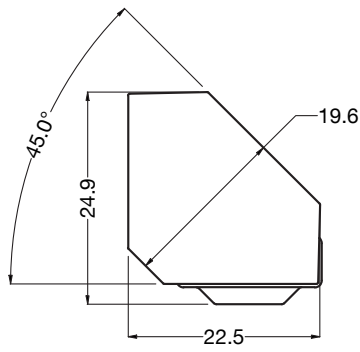
XXXXmm

XXXX

Specification Drawings



PROFILE ONLY



PROFILE WITH
FIXED BRACKET

Fittings are provided with end cable entry as standard. Extension cable with female socket connector can be purchased separately with the below product code(s).

5 core M12 Female extension lead 10000mm - **CA043**

PRO-SXL-RGBW-0822

Complies with EN60598-1 and pertinent regulations

Specifications are subject to change without prior notice. Please refer to our website for most up to date version.



Contact our sales team for further assistance

0113 263 9039

sales@kempslighting.com

kempslighting.com