



# Flexus 11 Silicone

Single Colour Flexible LED



5-Year  
Warranty



IP68  
Rating



UV  
Resistant



Flame  
Resistant



Solvent  
Resistant



Saltwater  
Resistant



RoHS  
Compliant



CE  
Certified



UK CA  
Assessed

## Applications

- Landscapes
- Pools
- Facades

## Features

- High quality homogenous light
- Horizontal bend
- 400mm min bend diameter
- Exterior and underwater use
- IP68
- Power from one or both ends
- Environmentally friendly
- UV resistant
- Silicone material

## Technical Information

<b>Power (W/m)</b>	12	16.5	18
<b>Lumen Output (lm/m)</b> Based on 4000K	750	1100	1400
<b>Material</b>	Silicone		
<b>Bending</b>	Horizontal		
<b>CCT</b>	2200K • 2700K • 3000K • 3500K • 4000K		
<b>CRI</b>	80 • 90		
<b>Control</b>	Switched • 0-10V • DALI • DMX • Phase • Bluetooth		
<b>Beam Angle</b>	116°		
<b>LED</b>	Nichia		
<b>Binning</b>	3 Step MacAdam		
<b>Input Voltage (V)</b>	24		
<b>Max length (1 Entry)</b>	15mtr (12W) • 10mtr (16.5W) • 6mtr (18W)		
<b>Cutting</b>	50mm (12W + 16.W) • 55.6mm (18W)		
<b>IP Rating</b>	IP68		
<b>IK Rating</b>	IK10		
<b>Operating Ambient Temp</b>	-40°C to 55°C (12W) • -40°C to 45°C (16.5W + 18W)		
<b>Lifetime</b>	>50,000hrs		
<b>Connection</b>	5mtr tail to bare end		

## Product Code

### FX11-S - 1 - 2 - 3 - 4 - 5 - 6

Create your product code by choosing your specification from the product areas.

Final example codes are shown to the right.

Example Codes

FX11-S-827-12-HB-1E-68-XXXX

FX11-S-840-16.5-HB-1S-68-XXXX

#### 1 CCT

2200K 80CRI	<b>822</b>	2200K 90CRI	<b>922</b>
2700K 80CRI	<b>827</b>	2700K 90CRI	<b>927</b>
3000K 80CRI	<b>830</b>	3000K 90CRI	<b>930</b>
3500K 80CRI	<b>835</b>	3500K 90CRI	<b>935</b>
4000K 80CRI	<b>840</b>	4000K 90CRI	<b>940</b>

#### 2 Power

12W	<b>12</b>
16.5W	<b>16.5</b>
18W	<b>18</b>

#### 3 Bend

Horizontal	<b>HB</b>
------------	-----------

#### 4 Cable Entry

1 End Feed	<b>1E</b>
1 Side Feed	<b>1S</b>
1 Rear Feed	<b>1R</b>
2 End Feed	<b>2E</b>
2 Side Feed	<b>2S</b>
2 Rear Feed	<b>2R</b>

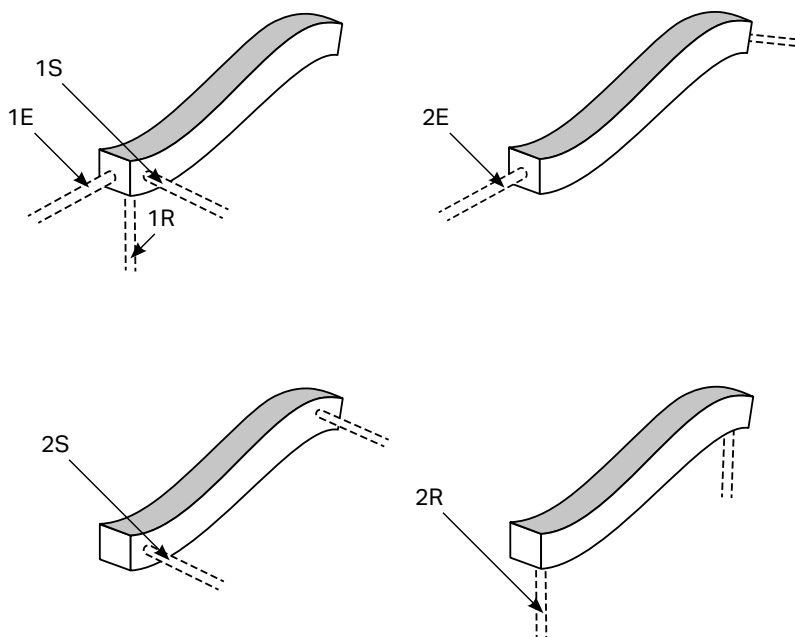
#### 5 IP Rating

IP68 Max 5m depth	<b>68</b>
-------------------	-----------

#### 6 Length

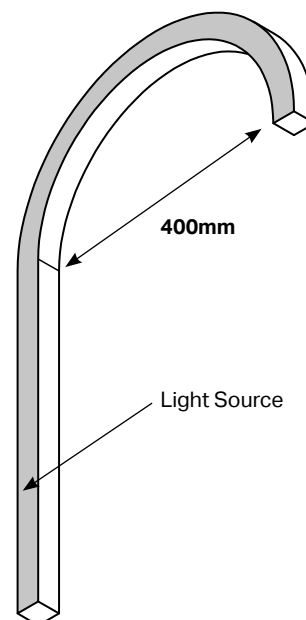
XXXXmm	<b>XXXX</b>
--------	-------------

## Cable Entry Options



## Assembly Caution

Min Bend Dia is **400mm**



Complies with EN60598-1 and pertinent regulations

Specifications are subject to change without prior notice. Please refer to our website for most up to date version.



Contact our sales team for further assistance

0113 263 9039

[sales@kempslighting.com](mailto:sales@kempslighting.com)

[kempsarchitecturallighting.com](http://kempsarchitecturallighting.com)

# Flexus 11

## Fixing Accessories

### Description

### Kemps Code

### Specification Drawings

Serrated Aluminium Profile 2000mm

**FX11-SAP-2000**

Serrated Aluminium Profile 1000mm

**FX11-SAP-1000**

Serrated Aluminium Profile 500mm

**FX11-SAP-0500**

Serrated Aluminium Profile 20mm

**FX11-SAP-0020**

Flanged Serrated Aluminium Profile 2000mm

**FX11-TPP-2000**

Flanged Serrated Aluminium Profile 1000mm

**FX11-TPP-1000**

Flanged Serrated Aluminium Profile 500mm

**FX11-TPP-0500**

Flanged Serrated Aluminium Profile 20mm

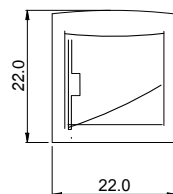
**FX11-TPP-0035**

Bendable Serrated Aluminium Profile 1000mm

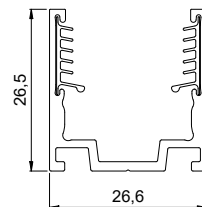
**FX11-BSP-1000**

Bendable Serrated Aluminium Profile 500mm

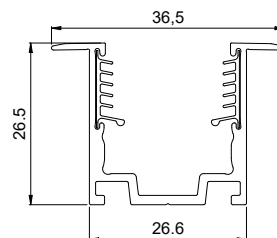
**F11-BSP-500**



Flexus 11



Serrated /  
Bendable  
Aluminium  
Profile



Serrated Recessed  
Aluminium Profile

### Product Lumen Data

CCT	CRI	WATTS/MTR	LUMENS/MTR	BENDING	MIN CUT LENGTH
2200K	80	12	700	Horizontal	50mm
2700K	80	12	720		50mm
3000K	80	12	720		50mm
3500K	80	12	750		50mm
4000K	80	12	750		50mm
2200K	80	16.5	950		50mm
2700K	80	16.5	1000		50mm
3000K	80	16.5	1000		50mm
3500K	80	16.5	1100		50mm
4000K	80	16.5	1100		50mm
2200K	80	18	1250		55.6mm
2700K	80	18	1350		55.6mm
3000K	80	18	1350		55.6mm
3500K	80	18	1400		55.6mm
4000K	80	18	1400		55.6mm

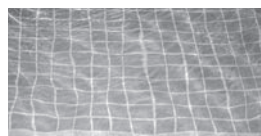
### Underwater Applications



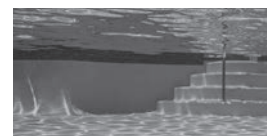
Fresh Water



Sea Water  
(Salinity<4%)



Swimming Pool  
(Chlorine<2PPM)



Swimming Pool  
(Ozone<0.3PPM)

Complies with EN60598-1 and pertinent regulations

Specifications are subject to change without prior notice. Please refer to our website for most up to date version.



**Contact our sales team for further assistance**

0113 263 9039

[sales@kempslighting.com](mailto:sales@kempslighting.com)

[kempsarchitecturallighting.com](http://kempsarchitecturallighting.com)